

HOW TO ASSEMBLE TIMBER ROOM PARTITION KIT

Supplied in clear pine with other Timbers, Sizes and Patterns
available on request

AVAILABLE IN 2600mm & 3100mm HIGH
BOTH CAN BE TRIMMED DOWN TO SUIT OTHER HEIGHTS

2600mm HIGH KIT

Max 2624mm

Min 2084mm

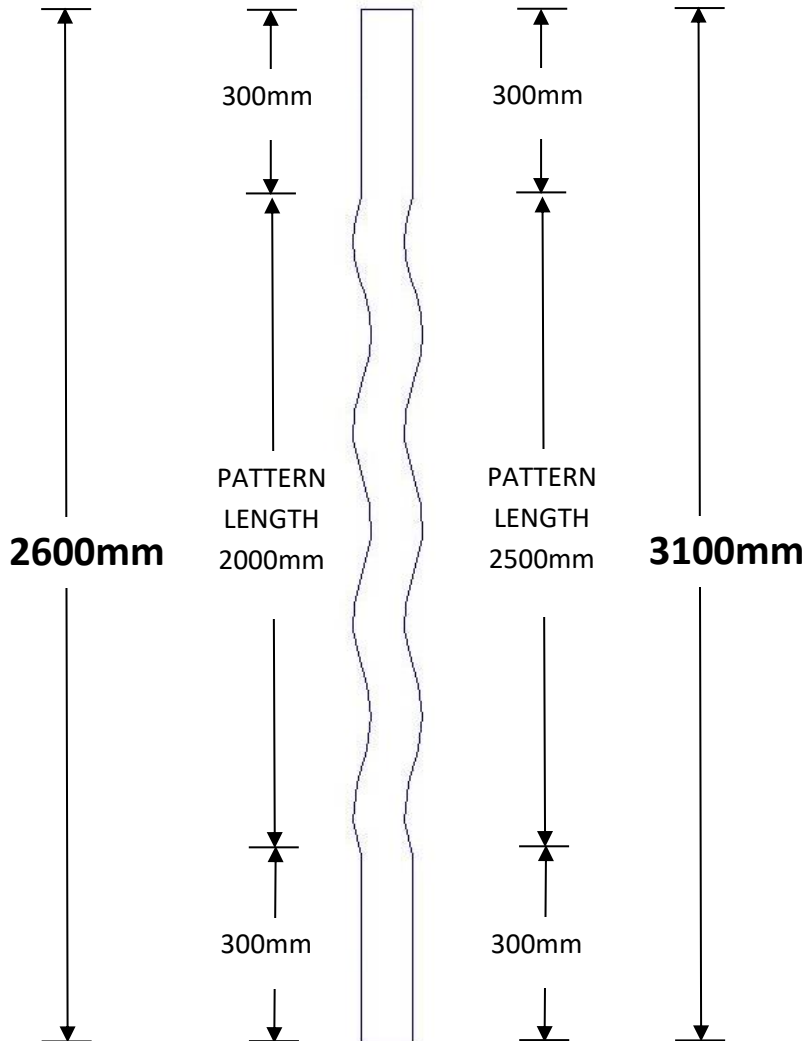
3100mm HIGH KIT

Max 3124mm

Min 2584mm

Please look on the back for

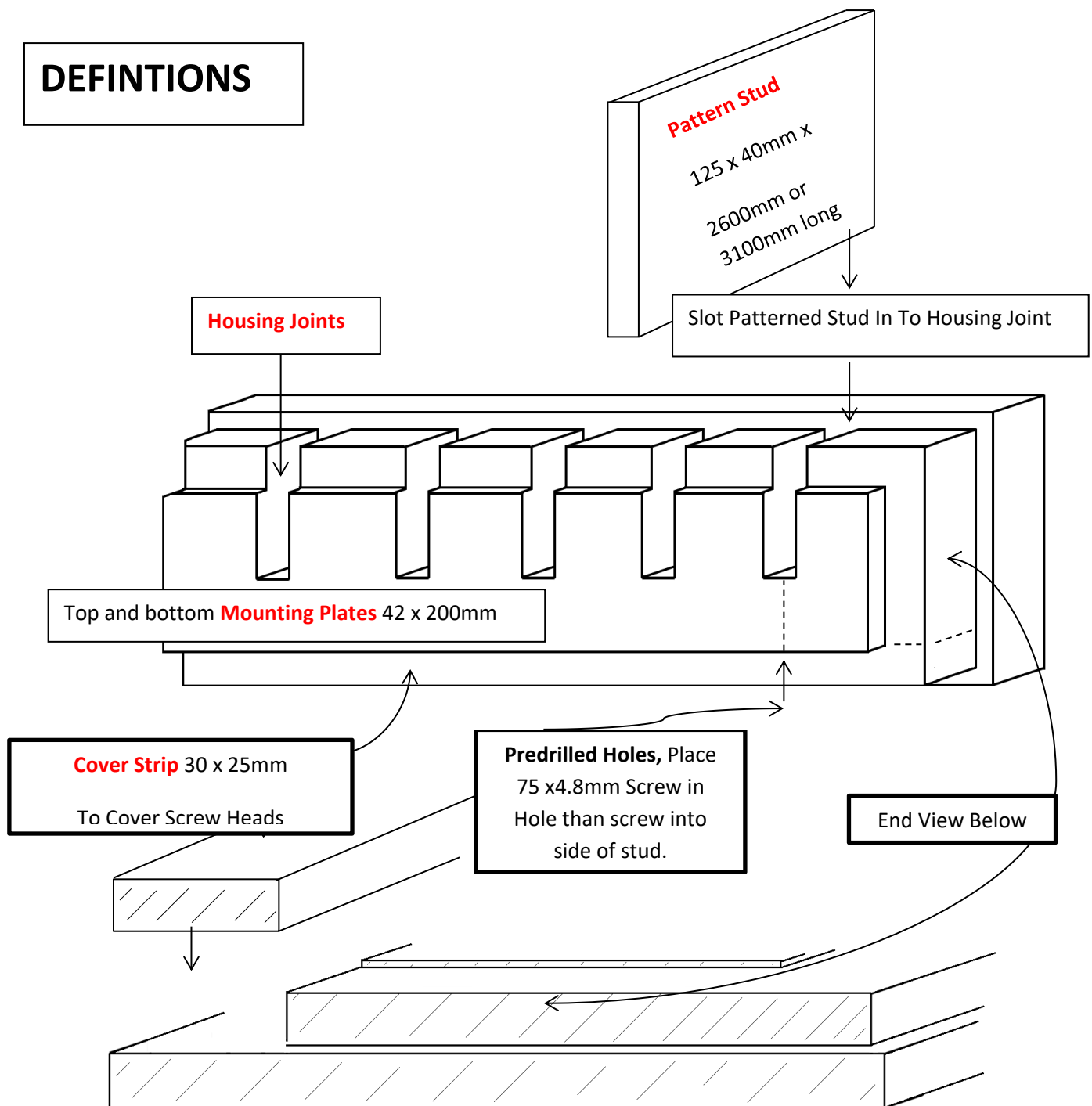
Product definitions



COMPONENTS INCLUDED

- A pair of top and bottom routed mounting plates 42 x 200mm with timber cover strips 30 x 25mm one meter of straight and one of curved.
- Pattern studs 7 per meter 125 x 40mm overall lengths 2600mm or 3100mm.
- Fixing screws 75 x 4.8mm for studs, one top and one bottom. 65 x 4.2mm for joining top and bottom mounting plates straight to curved parts.

DEFINITIONS



4 Easy Step Installation Instructions

Step 1: Screw straight and curved mounting plates together with 65 x 4.2mm screws.

Step 2: Aline vertically top and bottom mounting plates to floor and ceiling fix with 65 x 4.2mm screws through holes in the base of the housing joints.

Step 3: Trim the same amount off both ends of 3 patterned studs to suit the vertically space between top and bottom housing joints (floor and ceiling plates). Insert ONE STUD AT EACH END OF MOUNTING PLATES AND ONE IN THE MIDDLE. Then insert 75 x 4.8mm screws into predrilled wholes and screw into sides of patterned studs. Repeat this on the rest of studs top and bottom.

Step 4: Place straight and curved cover strips 30 x 25mm over screw heads, by clapping and gluing and or by drilling fine holes for thin nails.

Brochure can be found on our website www.karemwoodcraft.com.au